

APPENDIX A

Existing park, recreation and open space areas

Park, Recreation and Natural Open Space Areas

Beginning on the following page is an inventory of existing City of Stayton park areas, including a location map and summary of facilities.

Community Center Complex

Location: West of First Avenue, bounded on the north by Washington Street, on the south by the Salem Ditch and extending west nearly to Evergreen Avenue.

Size: 7.65 Acres

Ownership: City of Stayton

Status: Developed, Community Park

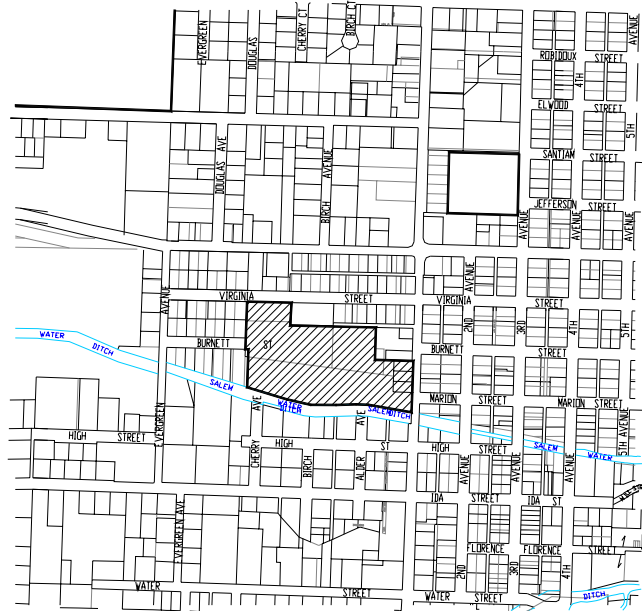
Existing Facilities: Community Center (5750 Sq. Ft.), covered swimming pool and bathhouse, lighted tennis courts and horseshoe pits, playground, library, parking areas, picnic area and open recreation field.

Deficiencies: Community Center: small meeting rooms
No Pre-school equipment in play area

- Planned Improvements:*
- Improve drainage at southeast corner of playing field and modify path and slope adjacent to Salem Ditch west of the library to provide a wider path and better visibility and drainage
 - Modify slope and grassy area near tunnel
 - Acquire 3-5 houses north of park facing Virginia Street.
 - Expand community center
 - Install larger commercial kitchen

Comments: N/A

Site Location:



Northslope Park

Location: Located on Dawn Drive, behind church off Fern Ridge Road.

Size: 0.96 Acre

Ownership: City of Stayton

Status: Developed, Mini Park

Existing Facilities: One-half basketball courts, play area, picnic area and swing set

Deficiencies: N/A

- Planned Improvements:*
- Develop paths for playground access
 - Improve plantings on south border
 - Wildflower area on east border
 - Upgrade access from Dawn Drive with paving bricks, a sign and gate
 - Sand volleyball court between swing and basketball court
 - Acquire an additional 1.25 acres to the east as the vacant land is subdivided
 - Direct street access should be made available and the park should become a focal point for the neighborhood
 - Design and install fencing between park and residential properties as needed

Comments: N/A

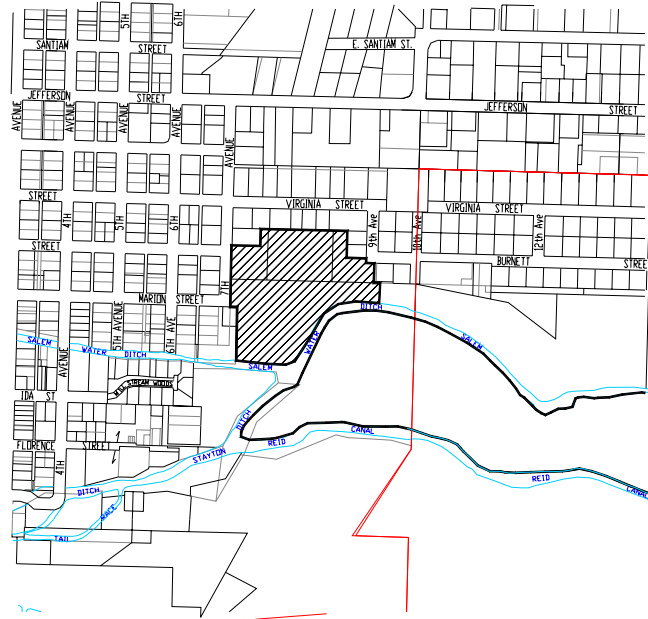
Site Location:



Pioneer Park (Neitling Property)

<i>Location:</i>	Marion and 7 th and adjacent to Wilderness Park
<i>Size:</i>	7.0 Acres
<i>Ownership:</i>	City of Stayton
<i>Status:</i>	Developed, Neighborhood Park
<i>Existing Facilities:</i>	Shelter with electric kitchen and picnic tables
<i>Deficiencies:</i>	N/A
<i>Planned Improvements:</i>	<ul style="list-style-type: none"> • Needs barbeque pits, picnic tables and benches • Build footpath along south boundary overlooking Salem Ditch • Plant low maintenance types of close growing hedge around restroom structure • Improve drainage of soggy areas east of play structure and construct additional picnic shelter • Install lights, lockable stove, and electrical outlet in picnic shelter • Conduct age and health analysis of trees and begin a tree replacement program • Reconstruct the basketball slab
<i>Comments:</i>	The site was previously leased to the American Legion that set up a miniature golf course at the park's west end, which was very popular with the public. Also, this site has been used for bluegrass festivals and other musical events in the past.

Site Location:



Quail Run Park

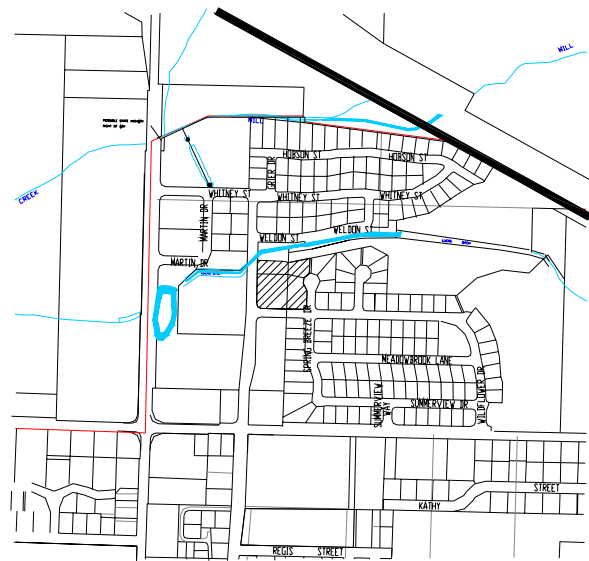
<i>Location:</i>	1500 Eagle Street
<i>Size:</i>	2 Acres
<i>Ownership:</i>	City of Stayton
<i>Status:</i>	Developed, Neighborhood Park
<i>Existing Facilities:</i>	Half basketball court, playground area, backstop for informal ball area, benches and paved walkways throughout.
<i>Deficiencies:</i>	N/A
<i>Planned Improvements:</i>	<ul style="list-style-type: none">• Develop horseshoe pits• Install volleyball court• Build and install one shelter with utilities• Develop plans for covered picnic areas• Install electrical outlets near picnic areas
<i>Comments:</i>	N/A

Site Location:



Santiam Park

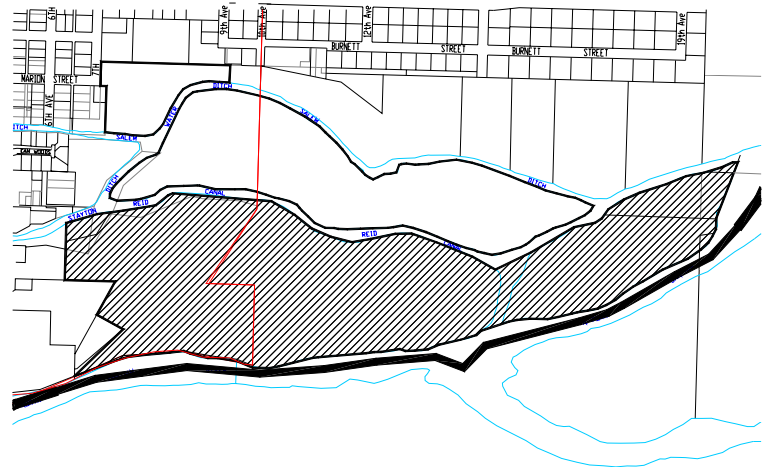
<i>Location:</i>	2500 3 rd Avenue
<i>Size:</i>	1.9 Acres
<i>Ownership:</i>	City of Stayton
<i>Status:</i>	Undeveloped, Neighborhood Park
<i>Existing Facilities:</i>	Pump station
<i>Deficiencies:</i>	N/A
<i>Planned Improvements:</i>	Playground, plaza, shelter and overlook
<i>Comments:</i>	N/A
<i>Site Location:</i>	



Stayton Riverfront Park

<i>Location:</i>	South of Wilderness Park and located along the Santiam River.
<i>Size:</i>	51.00 Acres
<i>Ownership:</i>	City of Stayton
<i>Status:</i>	Undeveloped, Open Space
<i>Existing Facilities:</i>	N/A
<i>Deficiencies:</i>	N/A
<i>Planned Improvements:</i>	<ul style="list-style-type: none">• Protect the natural open space area with minimal development.
<i>Comments:</i>	N/A

Site Location:



Westtown Park

Location: Isolated from heavy traffic on a cul-de-sac and with only pedestrian access on the north and south sides.

Size: 0.84 Acre

Ownership: City of Stayton

Status: Developed, Mini-park

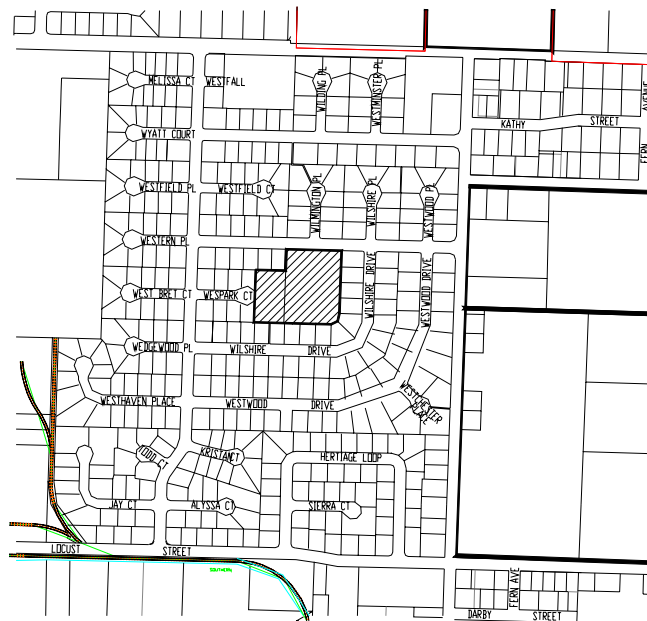
Existing Facilities: One-half basketball court, play equipment and drinking fountain (ADA accessible).

Deficiencies: N/A

- Planned Improvements:*
- Tree planting at the entrance to create symmetrical park entrance
 - Tree planting near basketball court
 - Extend berms toward the play area to complete their job of enclosing space
 - Additional play equipment
 - Curvilinear concrete wall with specially designed places for kids
 - Install park benches
 - Shaded seating area adjacent to children’s play areas
 - Hard wall along basketball court for tennis and racquetball practice
 - Bicycle racks

Comments: N/A

Site Location:



Wilderness Park

Location: East of Pioneer Park, bounded on the north by Salem ditch and on the south by the Santiam water control district power canal.

Size: 55.0 Acres

Ownership: City of Stayton

Status: Developed, Open Space Area

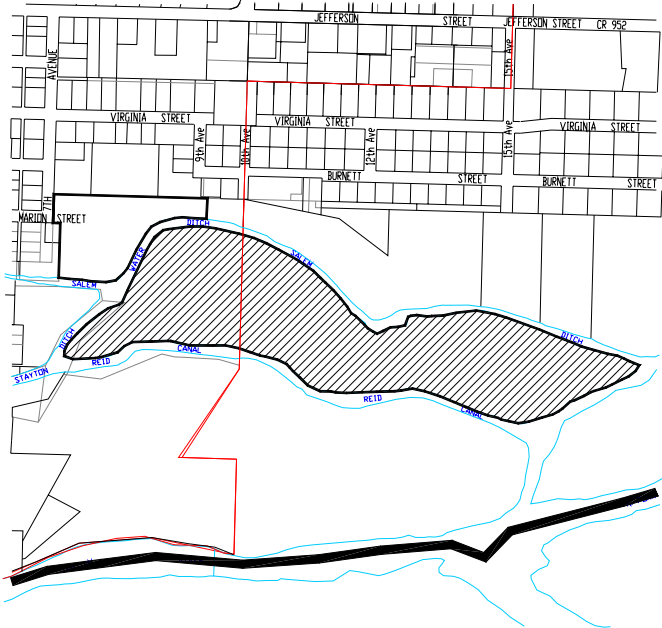
Existing Facilities: Trails, the (old rock pit) Pond and covered bridge

Deficiencies: Ponds have been clogged with brush or were never properly developed

- Planned Improvements:*
- Develop trail maintenance standards
 - Clear and improve existing trails, investigate the possibility of a perimeter trail and some access to the presently inaccessible southwest portion of the park
 - Acquire pedestrian/bike trail link to the east and north from Wilderness Park via a greenway along the North Santiam River to a new neighborhood park in the east end of Stayton south of E. Santiam Street
 - There is some opportunity to develop a trail through this area to connect the park with a trail up to the summit of Mount Scott
 - Improve waterway, nature trails, and picnic areas

Comments: N/A

Site Location:



APPENDIX B

Public Workshop Results and Operations Review

Public Workshop Results

A public workshop meeting was held on June 4th at 7:00 p.m., 2002. The format of the meeting consisted of small group discussions. Participants were grouped together into tables of 4-6 people. Each group was asked to respond to a list of pre-determined questions. At the end of the evening, each group was asked to summarize their findings and comments before the audience. A total of five tables participated in the exercise. A summary of their findings is listed below.

Question #1 – What recreation facilities and programs are most needed?

Participants were asked, as a group, to list facilities and programs they felt were most needed in the community. The list of items generated by the group is shown below. In many cases, a specific item was identified by several tables.

- Keep the indoor pool open and operating
- Bike racks at parks
- A riverfront park
- City-wide trail system
- Connect sidewalks
- Neighborhood Parks
- Amphitheatre for concerts and other public events
- Wilderness Park trail map
- Kiosks in the parks
- Visitor information kiosk at library, needs improvement
- Expand night basketball. Need more volunteers
- Skate park (permanent and multi-use)
- Provide sport tournaments (tennis, basketball, horseshoes, etc.)
- Need public art
- Need more youth sport programs
- Need more facilities on Neitling Property (shelter building with utilities, tables, passive facilities)
- Need more sport fields (also a sport field complex)
- Senior center/activities
- Need more recreation activities in general
- Restroom facilities in the parks

Question #2a – How would you rate the level and quality of development in your parks? (1 bad-10 good)

While it is more difficult to reach a consensus as a group, each table came up with a rating level. In most cases it was a range.

The four tables arrived at the following conclusions:

- 3-5
- 3-9
- 4
- 7-8

Question #2b – What improvements are most needed in the existing parks?

- Covered picnic areas
- Basketball courts
- Better playground maintenance
- Restroom facilities in most parks
- Tables and benches
- Trails and bike paths
- Better turf
- Need trails at community center
- Edging and cleanup caused by root damage
- A skate park
- Northslope Park- better access, basketball court, picnic tables and benches, new playground equipment, picnic tables, restroom building
- Westtown Park- more access, replace playground equipment, picnic tables, restroom
- Community Center- need trails, original design may be outdated
- Quail Run Park- restroom
- Pioneer Park(Neitling Property)- kitchenette, Neitling Property landscaping, close park road (new access for residents at 10th)

Question #3 – What types of parks are most needed in Stayton?

The participants were asked to choose between large community parks (15-25 acres in size), neighborhood parks (5 acres in size), small mini-parks (less than 1 acre) or natural open space.

- Community parks are most needed. However, neighborhood parks are also needed in future subdivisions.
- Open Space is needed. Options include the riverfront, along the Cascade Highway and the wetlands at the north end of town.

- Riverfront Property: Develop as a community park with open space and active use areas. However, other opinions favored natural open space only.

Question #4 – What park and recreation services should Stayton provide?

- Do it all
- Emphasize park maintenance; park development as able
- Hire a recreation coordinator (special events were specifically mentioned)
- Development of parks

Question #5 – Should Stayton pursue a major capital development program?

As a point of reference, a bond measure of \$1 million would cost the taxpayer about \$0.23 per \$1,000 assessed valuation.

- Yes, based on an approved capital improvement list
- Yes, but a 5-10-year bond measure, not a 20-year bond
- Yes, for appropriate projects

Analysis of Management and Operations

An analysis of current park and recreation operations was conducted. A summary of these findings is discussed below.

Services Provided

Current park and recreation services are provided by the City of Stayton and many private and quasi-private organizations. The city is the primary provider of park land and open space. In the past, the city had paid the YMCA about \$60,000 annually to manage the existing swimming pool. However, recently, the city has decided to manage the pool solely.

The city has no sport fields in any of its parks. Private sport groups use school facilities to run their programs.

Organizational Structure

Park maintenance responsibility is under the city's Public Works Department. The park maintenance crew consists of one full-time person and two seasonal workers.

Cost of Service

The current operating budget for park and recreation services is as follows:

Park Maintenance	\$121,225
Swimming Pool	\$173,304
TOTAL	\$294,529

On a per-capita basis, the total cost of park and recreation services in Stayton amount to about \$45.70 per capita. This amount is about average for most Oregon communities. However, many Oregon communities also provide other recreation services as well.

Providing additional recreation services such as organized sports, recreation programs and other activities that generate some revenue, the city could substantially increase its level of service without a corresponding budget increase.

Current park maintenance costs (excluding the utility cost of the swimming pool) is about \$121,225. On a per-acre basis, this amounts to about \$5,957.

System Development Charges (SDC's)

The city currently collects a fee of \$1,062 for every new residential unit built in the city. This money is placed in a reserve account and can only be used for park development. Currently, this account has about \$228,324. It is being reserved for the development of Santiam Park. On average, about \$30,000 is added to the account each year.

APPENDIX C
Assessing Needs

Methodology of Assessing Park Land Needs

Developing a statement of land needs for park areas and open space, is the most difficult type of needs analysis because it is dependent upon local values, availability of land, financial resources and desired service levels.

To determine specific land needs for the Stayton planning area, several analytical methods were used. These included a comparison to other similar communities, results of the 1990 survey, national trends, land availability and geographical deficiencies for parks and open space areas. It should be noted that even with all the statistical information available, a certain amount of subjective analysis and professional experience must be used to quantify the standards.

On the following pages, recommended standards for specific types of park areas are given. In many cases, comparisons to other communities are given. These comparisons are given as the "existing ratio" or "recommended standard". The existing ratio is the existing amount of park land divided by the existing population. It is expressed in terms of acres per 1,000 population. The recommended standard is the desired amount of park land expressed in terms of acres per 1,000 population.

Existing and Forecasted Population

The ratio of park land or recreation facilities is based on a comparison with the existing population base. By developing a desired level of service (recommended standard) and applying it to a future population forecast, one can determine future needs. For determining the existing ratio, the population within the existing city limits was used.

For determining population growth projections, figures from the housing and growth management study were used. The target year is 2020 or approximately 20 years. For this study, we will use the existing and future population forecasts identified below.

Table C.1
Population Forecast
Stayton Planning Area

Year	Stayton Planning Area
2000	6,816
2020	13,827

Table C.2
Summary of Existing Parks and Facilities
Stayton Planning Area

Park Site	Total Park Land (Acres)	Number of Sites
Mini-Parks	1.80	2
Neighborhood Parks	9.00	2
Community Parks	7.65	1
Regional Parks	0.00	0
Special Use Areas	0.00	0
Linear Parks	0.00	0
Open Space Areas	106.00	2
Undeveloped Land	1.90	1
TOTAL	126.35	8

Park Land Needs

On the following pages, specific needs for each type of park land are discussed. The categories of park land include:

1. Mini-Parks
2. Neighborhood Parks
3. Community Parks
4. Regional Parks
5. Special Use Areas
6. Linear Parks
7. Open Space Areas

Because school recreation areas are only partially accessible to the general public, no statement of need was derived for these areas. Similarly, no needs were developed for private recreation lands such as homeowner open space areas or golf courses because these are limited or restricted by fee or ownership.

Mini - Parks

Mini-parks, tot lots and children's playgrounds are all small single purpose play lots designed primarily for small children usage. Because of their size, the facilities are usually limited to a small open grass area, a children's playground and a small picnic area. Size ranges from one-half acre to two acres.

A. Existing Conditions:

1. Current Supply:

- Currently, there are two mini-parks in the Stayton planning area.

2. Development Level:

- In general, the development opportunity within mini-parks is limited due to their size. For this reason the level of development is usually quite high.

3. Service Area:

- The service radius for a mini-park is usually considered to be a quarter mile. Mini-parks typically are developed in areas that have a limited service area or population base.

4. Maintenance Impacts:

- On a per acre basis, this type of park is most expensive to construct and maintain.

B. Public Involvement/Trends:

1. Workshop Results:

- When asked what types of parks are most needed in Stayton, mini-parks were not cited as a needed facility.

2. Trends

- Often this type of park is popular in new sub-divisions, which traditionally have a high ratio of young children. However, as the children grow older, this type of park attracts less use.
- It should also be noted that in communities where land is scarce or where development has already taken place, the development of mini-parks is a necessary option for serving some neighborhoods.

3. Comparison to Other Communities:

- Existing ratios for selected communities range from 0.03 acres/1,000 population to of 0.31 acres/1,000 population.

Table C.3
Existing Mini-Park Ratios
Selected Cities

City	Existing Ratio
Stayton	0.26 Ac./1,000 Pop.
Monmouth	0.31 Ac./1,000 Pop.
Independence	0.20 Ac./1,000 Pop.
Troutdale	0.18 Ac./1,000 Pop.
Dallas	0.11 Ac./1,000 Pop.
Lebanon	0.05 Ac./1,000 Pop.
Forest Grove	0.03 Ac./1,000 Pop.

4. Input from the Parks Board:

The development of mini-parks should be discouraged, unless no other opportunity exists, due to the high cost of operation and maintenance.

C. Recommendations:

1. Level of Service:

- Recommended service area for a mini-park is a quarter mile.

2. Determination of Demand Standard:

- It is recommended that the city acquire or develop this type of park in areas of the city where land is scarce or in areas with a limited service area.
- Based on the service area analysis shown on page C-9, one additional mini-park site is needed to supplement the neighborhood parks system. A typical mini-park is about 2 acres in size. If this acreage is added to existing inventory of 1.8 acres and then divided by the 2020 population, we come up with a service level of 0.29 acres per 1,000 population.
- If this standard is applied to the existing 2000 population, there is a total need for 1.97 acres of mini-park land or 0.18 additional acres of mini-park land. In the year 2020, this will be equivalent to one additional park site.

Table C.4
Recommended Demand Standard
Mini-Parks

Standard:	Ratio
Present Inventory	1.8 Acres
Present Sites	2 Sites (Westown Park and Northslope Park)
Present ratio	0.26 Ac./ 1,000 Pop
Recommended Demand Standard	0.29 Ac./ 1,000 Pop.

3. Development Standards:

- It is recommended that the city establish minimum development standards for mini-parks. This would consist of minimum size requirements, siting criteria and appropriate facilities.

4. Comments:

- Within large to medium high-density residential developments, the city should encourage private developers to provide small mini-parks (e.g., playground areas) to serve their individual developments.

Neighborhood Parks

Neighborhood parks are a combination playground and park designed primarily for non-supervised, non-organized recreation activities. They are generally small in size and serve an area of approximately one half-mile radius. Typically, facilities found in a neighborhood park include a children's playground, picnic areas, trails, open grass areas for passive use, outdoor basketball courts and multi-use sport fields for soccer, youth baseball, etc. Size ranges from 2 to 7 acres, with the optimum size being 5 acres.

A. Existing Conditions:

1. Current Supply:

- Presently, there are two neighborhood parks in the Stayton planning area.

2. Development Level:

- Generally, neighborhood parks provide a wide range of facilities and are highly developed.

3. Service Area:

- The service area of a neighborhood park is generally recognized to be a half-mile radius.

Please refer to the Neighborhood Park Service Area Map for specific areas.

4. Maintenance Impacts:

- While not as efficient to maintain and operate as community parks, a neighborhood park system provides a balance of convenience and cost of operation.

B. Public Involvement/Trends:

1. Workshop Results:

- One group out of four, thought a neighborhood park was the most needed type of park in Stayton.

2. Trends

- Most communities in the Northwest have developed a park system centered on the neighborhood park. This balances the issue of convenience with the cost of operation/maintenance.

3. Comparison to Other Communities:

- Existing ratios for selected communities range from 0.20 acres/1,000 population to of 1.50 acres/1,000 population.

Table C.5
Existing Neighborhood Park Ratios
Selected Cities

City	Existing Ratio
Stayton	1.32 Ac./ 1,000 Pop
Dallas	1.50 Ac./1,000 Pop.
Monmouth	1.29 Ac./1,000 Pop.
Troutdale	1.26 Ac./1,000 Pop.
Forest Grove	0.77 Ac./1,000 Pop.
Lebanon	0.34 Ac./1,000 Pop.
Independence	0.20 Ac./1,000 Pop.

4. Input from Parks Board:

The city should focus its efforts on developing neighborhood parks with the development of future subdivisions.

C. Recommendations:

1. Level of Service:

- The service area for a neighborhood park is generally considered to be a half-mile radius.

2. Determination of Demand Standard:

- It is recommended that the city acquire and develop this type of park.
- Based on the service area analysis shown on page C-9, five additional neighborhood park areas are needed to completely serve the area within the Stayton urban growth area. Two of these sites will be fulfilled by future community parks for a net need of three additional neighborhood parks. Assuming an average of five acres per park, this is equivalent to 15 additional acres. If this acreage is added to the existing inventory of 9 acres and then divided by the 2020 population, we come up with a service level of 1.74 acres per 1,000 population.
- If this standard is applied to the existing 2000 population, there is a total need for 11.86 acres of neighborhood park land or 2.86 additional neighborhood park land. This is equivalent to roughly one additional park at the present time. This need can be fulfilled through the eventual development of Santiam Park.

Table C.6
Recommended Demand Standard
Neighborhood Parks

Standard	Ratio
Present Inventory	9.00
Present Sites	2 Sites (Quail Run Park and Pioneer Park (Neitling Property))
Present ratio	1.32 Ac. /1,000 Pop
Recommended Demand Standard	1.74 Ac./ 1,000 Pop.

3. Development Standards:

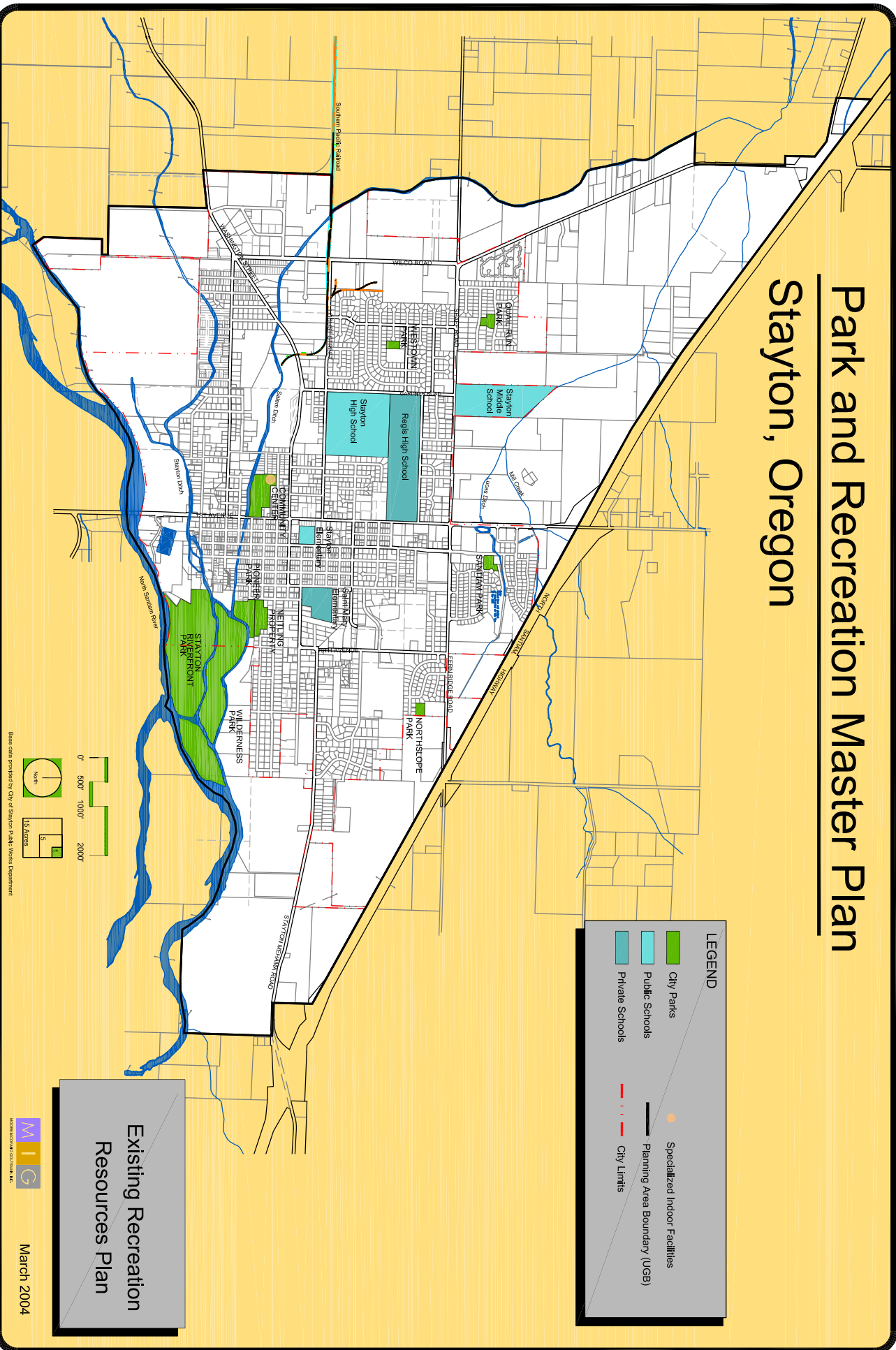
- If the city or private developers wish to provide this type of service, it is recommended that the city adopt minimum development standards for neighborhood parks. This would include a list of appropriate facilities, site improvements and site selection requirements.

4. Comments:

- The city currently owns one undeveloped site known as Santiam Park. With its eventual development, it will fulfill the short-term need for additional neighborhood park land.

Park and Recreation Master Plan

Stayton, Oregon



LEGEND

- City Parks
- Public Schools
- Private Schools
- Specialized Indoor Facilities
- Planning Area Boundary (UGB)
- City Limits

0' 500' 1000' 2000'

North

US Acres

Base data provided by City of Stayton, Public Works Department

Existing Recreation Resources Plan



March 2004

Community Parks

A community park is planned primarily to provide active and structured recreation opportunities. In general, community park facilities are designed for organized activities and sports, although individual and family activities are also encouraged. Community parks serve a much larger area and offer more facilities. As a result, they require more in terms of support facilities such as parking, restrooms, and covered play areas. Community parks usually have sport fields or similar facilities as the central focus of the park. Their service area is roughly a 1-2 mile radius. Minimum size should be 15 to 20 acres, with the optimum size being 30 acres.

A. Existing Conditions:

1. Current Supply:

- Currently, there is one community park in the Stayton planning area.

2. Development Level:

- In general, community parks contain a variety of facilities and are developed at a fairly high level.

3. Service Area:

- The service area for a community park is normally considered to be one mile.

Please refer to the Community Park Service Area for these specific areas.

4. Maintenance Impacts:

- Community parks are the most efficient types of park to maintain and operate. The existing community park is adequately maintained.

B. Public Involvement/Trends:

1. Workshop Results:

- There was support for the provision of community parks.

2. Trends

- Many communities with limited operating budgets are gravitating toward park systems centered on the community park. This is due primarily to the wide variety of facilities and their cost of operation.

3. Comparison to Other Communities:

- Stayton's current ratio of 1.13 acres / 1,000 population. The range for other communities is 0.48 acres / 1,000 population to 7.69 acres / 1,000 population.

Table C.7
Existing Community Park Ratios
Selected Cities

City	Existing Ratio
Stayton	1.13 Ac./1,000 Pop.
Dallas	1.45 Ac./1,000 Pop.
Forest Grove	1.34 Ac./1,000 Pop.
Troutdale	1.05 Ac./1,000 Pop.
Lebanon	0.48 Ac./1,000 Pop.
Monmouth	None
Independence	None

4. Input from Parks Board:

Considering the limited financial resources, the city should focus its efforts on providing community parks within a 1-mile radius of most residents.

C. Recommendations:

1. Level of Service:

- Service area for a community park is a one-mile radius.

2. Determination of Demand Standard:

- It is recommended that the city increase the current standard for community parks in order to provide community parks within close proximity of most residences (1-mile service radius).
- Based on the service area analysis shown on page C-14, about two additional community park sites are needed to cover the area within the Stayton planning area. At an average size of 20 acres each, this is equivalent to 40 additional acres. If this acreage is added to the existing inventory of 7.65 acres and divided by the 2020 population, a service level of 3.45 acres per 1,000 population is derived.
- If this standard is applied to the existing 2000 population, there is a total need for 23.52 acres of community parkland. This represents an additional need of 15.87 acres.

Table C.8
 Recommended Demand Standard
 Community Parks

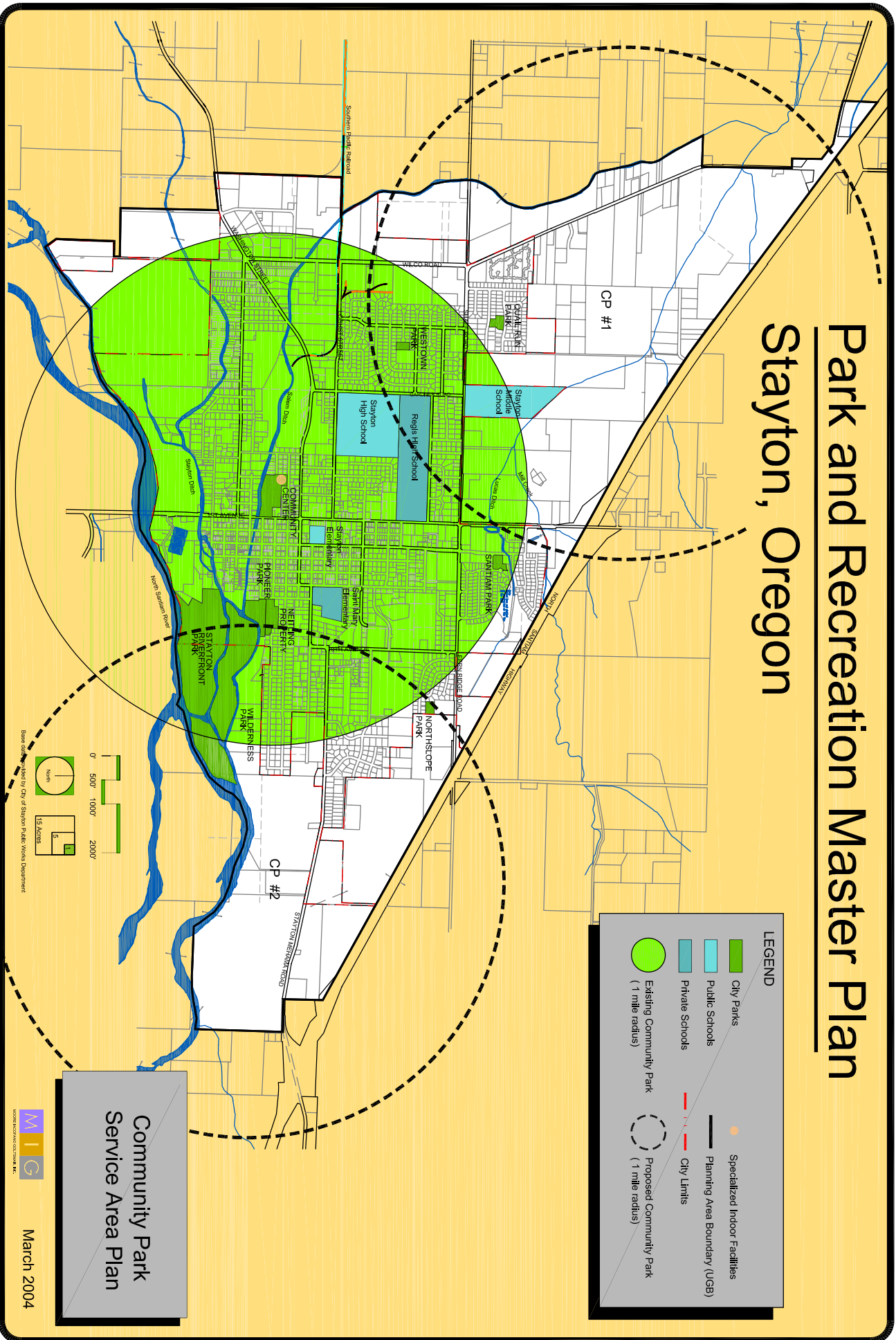
Standard:	Ratio
Present Inventory	7.65 Acres
Present Sites	1 Site
Present ratio	1.12 Acres/1,000 Population
Recommended Demand Standard	3.45 Acres/1,000 Population

3. Development Standards:

- The city should adopt minimum development standards for community parks. This would include a list of appropriate facilities, site improvements and site selection requirements.

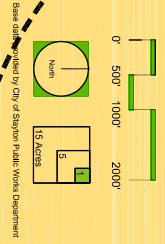
Park and Recreation Master Plan

Stayton, Oregon



LEGEND

- City Parks
- Public Schools
- Private Schools
- Existing Community Park (1 mile radius)
- Proposed Community Park (1 mile radius)
- Specialized Indoor Facilities
- Planning Area Boundary (USB)
- City Limits



Community Park Service Area Plan



March 2004

Base data provided by City of Stayton Public Works Department

Regional Parks

Regional parks are recreational areas that serve the city and beyond. They are usually large in size and often include one specific use or feature that makes them unique. Typically, use focuses upon passive types of recreational activities. Those located within urban areas sometimes offer a wider range of facilities and activities.

A. Existing Conditions:

1. Current Supply:

- Currently, there are no regional parks in the Stayton area.

2. Development Level:

- Depending on their nature, regional parks are generally developed at a lower level compared to other types of park and recreational facilities.

3. Service Area:

- The service area of a regional park may extend as much as 50 miles depending upon the facilities.

4. Maintenance Impacts:

- Depending upon the facilities and the level of development, regional parks can be very costly to maintain and operate. Typically, user fees and other types of revenue production typically offset the cost of operation.

B. Public Involvement/Trends:

1. Workshop Results:

- There was no mention of the need for regional park facilities in the Stayton area.

2. Trends

- Most communities do not have the opportunity to develop regional parks due to their size and cost of acquisition.

3. Input from the Parks Board:

The city should not acquire or develop regional parks. The provision of these types of parks should be left to Marion County or the Oregon State Parks Department.

C. Recommendations:

C. RECOMMENDATION:

1. Level of Service:

- No service level is recommended.

2. Determination of Demand Standard:

- It is recommended that the city not acquire or develop this type of park.

Table 4.10
Recommended Demand Standard
Regional Parks

Standard:	Ratio
Present Inventory	No Acres
Present Sites	No Sites
Present ratio	None
Recommended Demand Standard	None

3. Development Standards:

- The development standards for regional parks will be dependent upon the features of the site.

Special Use Areas

Special use areas are miscellaneous public recreation areas or land occupied by a specialized facility. Some of the uses that fall into this classification include special purpose areas, community gardens, single purpose sites used for field sports or sites occupied by buildings.

Within this context, there are a number of different sub-categories of special use areas. These include:

- 1. Athletic parks are sites where sport fields are the central focus. Facilities may consist of baseball, softball and soccer fields. Supplemental activities may include tennis, volleyball and picnic areas.*
- 2. Single Purpose sites are dedicated for unique types of recreational activities. This would include facilities such as indoor facilities, and skate parks.*

A. Existing Conditions:

1. Current Supply:

- Currently, there are no special use areas in the Stayton area.*

2. Development Level:

- Because of their nature, most special use areas are fairly well developed.*

3. Service Area:

- Depending upon the function it serves, the service area for a special use site varies widely. Some facilities draw visitors from all over the region while others serve the immediate area.*

4. Maintenance Impacts:

- The level of maintenance and operation varies widely depending upon the use of these sites.*

B. Public Involvement/Trends:

1. Workshop Results:

- Participants of the workshop meeting identified the need for cultural arts in Stayton, which may suggest the need for an amphitheatre or other special use area.*

C. Recommendations

2. Trends

- Many communities throughout the northwest have developed specialized facilities for field sports, such as softball and soccer; indoor spaces for volleyball and basketball, skateboard parks, golf courses, botanical and formal gardens, and amphitheaters.

3. Input from Parks Board:

The city should provide land for the development of unique recreational areas, such as a sports complex, additional indoor facilities and a skate park. The city should pursue partnership arrangements with private organizations for the development of these facilities.

1. Level of Service:

- It is recommended that the level of service be increased to accommodate additional areas and facilities.

2. Determination of Demand Standard:

- It is recommended that the city develop additional special use areas. This is based on the factors listed on the following:
 - * Skate park (2 acres)
 - * Senior center (3 acres)
 - * Sports complex (20 Acres)
- In order to accommodate additional special use facilities, approximately 25 acres of additional land are needed. If this acreage is divided by the 2020 population, a service level of 1.81 acres per 1,000 population is derived.
- If this standard is applied to the existing 2000 population, there is a total need for 12.34 acres of park land.

Table C.11
 Recommended Demand Standards
 Special Use Areas

Standard:	Ratio
Present Inventory	0.00 Acres
Present Sites	0 Site
Present Ratio	0 Acres/1,000 Population
Recommended Demand Standard	1.81 Acres/1,000 Population

3. Development Standards:

- The city should establish minimum development standards for special use areas. These will vary depending on the facility and intended use.

Linear Parks

Linear parks are developed landscaped areas and other lands that follow linear corridors such as abandoned railroad right-of-ways, canals, powerlines and other elongated features. This type of park usually contains trails, landscaped areas, viewpoints and seating areas.

A. Existing Conditions:

1. Current Supply:

- Currently, there are no linear parks in the Stayton planning area.

2. Development Level:

- Because of their nature, most linear park areas are only low to moderately developed. However, in some instances, these types of sites can be highly developed.

3. Service Area:

- Depending upon the function it serves, the service area for a linear park varies widely.

4. Maintenance Impacts:

- Depending upon the level of development, maintenance and operation, the service area for a linear park varies widely.

B. Public Involvement/Trends:

1. Workshop Results:

- There was a lot of support for pathways and trails at the public workshop meeting. These types of facilities are often the focus of linear parks.

2. Survey Results:

- In the 1990 survey there was a desire to consider vacated alleys for potential footpaths, pedestrian access ways and bicycle paths.
- Compared to other projects (e.g., development of new parks, acquisition of open space); the development of a trails system ranked third in the 1990 survey.

3. Trends

- Many communities throughout the northwest have begun to develop linear parks with pathways and trails as their central focus.

C. Recommendations:

4. Input from the Parks Board:

The city should utilize linear corridors such as ditches and other rights of way to maximize extent possible in an effort to develop an off-street trail system.

1. Level of Service:

- It is recommended that the level of service be increased to allow for the development of linear parks.

2. Determination of Demand Standard:

- It is recommended that the city develop linear parks.
- There are several opportunities to develop trails along linear corridors, along several ditches, and within the Santiam Highway ROW. Potential linear parks are listed below:

Stayton Ditch (41 Acres)
 Lucas Ditch (7 Acres)
 Salem Ditch (39 Acres)
 Santiam Highway ROW (22 Acres)

- In order to accommodate the potential linear parks identified above, approximately 109 acres of land is needed. If this acreage is divided by the 2020 population, a service level of 7.88 acres per 1,000 population is derived. If this standard is applied to the existing 2000 population, there is a total need for 53.71 acres of parkland.

Table C.12
 Recommended Demand Standards
 Linear Parks

Standard:	Ratio
Present Inventory	None
Present Sites	None
Present Ratio	None
Recommended Demand Standard	7.88 Acres/1,000 Population

3. Development Standards:

- The City should establish minimum development standards for linear areas. These will vary depending on the area and intended use.

Open Space Areas

Natural open space is defined as undeveloped land primarily left in its natural environment with recreation uses as a secondary objective. It is usually owned or managed by a governmental agency and may or may not have public access. This type of land often includes wetlands, steep hillsides or other similar places. In some cases, environmentally sensitive areas are considered as open space and can include wildlife habitats, stream and creek corridors, or unique and/or endangered plant species.

Within this context, there are a number of different sub-categories of open space. These include:

- 1. Forest Resource Land: Consists of significant lands devoted primarily to forests.*
- 2. Buffers: Includes lands adjacent to highways and enhance "gateway" entrances; community separators between urban areas; and lands that serve as buffers between urban development and resource land.*
- 3. Greenway Corridors: Consists of lands that link existing resource areas (e.g., parks, trails, view sheds.); wildlife corridors; and waterways.*
- 4. Ecosystems Lands: Includes lands providing essential ecosystem services (e.g., flood control, erosion control, water purification), and aquatic ecosystems (streams, ponds, riparian corridors, etc.)*
- 5. Lands that Protect Wildlife and Natural Communities: Includes lands that contain endangered, rare or threatened species and natural plant communities indigenous to the region.*
- 6. Lands of Historical, Cultural and Educational Importance: Consists of lands that contain historic buildings or sites; lands that have archeological significance; and lands of educational or scientific value.*
- 7. View Properties: Includes lands that possess outstanding scenic qualities visible from roadways and other resources and hilltop lands/areas that offer panoramic views.*

A. Existing Conditions:

1. Current Supply:

- In the Stayton area, there are two sites that fall under the open space category, which are Wilderness Park and Stayton Riverfront Park.*

2. Development Level:

- Most open space sites are minimally developed or left in a natural undisturbed state. Development, if any, is usually limited to parking areas, trailhead facilities and pathways/trails.*

3. Service Area:

- There is no defined service area for open space. Service area is determined by its intended purpose such as separation of neighborhoods, preservation of environmentally sensitive areas, and steep hillsides.

4. Maintenance Impacts:

- The maintenance of open space areas is relatively low compared to other types of recreational spaces.

B. Public Involvement/Trends:

1. Workshop Results:

- There was a lot of support for the preservation of open space.

2. Trends

- In larger metropolitan areas, the preservation of open space has become very important. This concern is becoming increasingly important in smaller communities as well.

3. Comparison to Other Communities:

- Stayton has a current ratio of 15.55 acres/1,000 population. The ratios for other communities range between none and 4.92 acres/1,000 population.

Table C.13
Existing Natural Open Space Ratios
Selected Cities

City	Existing Ratio
Stayton	15.55 Ac./1,000 Pop.
Happy Valley	16.07 Ac./1,000 Pop.
Troutdale	4.92 Ac./1,000 Pop.
Dallas	1.09 Ac./1,000 Pop.
Forest Grove	0.93 Ac./1,000 Pop.
Lebanon	0.92 Ac./1,000 Pop.
Monmouth	None
Independence	None

C. *Recommendations:*

4. Input from the Parks Board:

The city should continue to preserve open space lands, particularly properties along the Santiam River and those that are threatened by development and do not have other mechanisms available for their protection.

1. Level of Service:

- It is recommended that the amount of natural open space be increased to preserve additional land along the Santiam River and other naturally occurring creeks in the area. This would also include environmentally sensitive areas (e.g., wildlife habitat, wetlands).

2. Determination of Demand Standard:

- It is recommended that the city increase its current ratio in order to preserve additional open space lands.
- There are several opportunities for open space along the river and creek corridors. Potential open space areas include:

North Santiam River (91 Acres)

Mill Creek (14 Acres)

- Approximately 105 acres of open space land along the Santiam River and creek corridors. Assuming that all of this land can be preserved for public uses, it would increase the present inventory. If this total is added to the existing acreage and divided by the 2020 population, we come up with a service level of 15.26 acres per 1,000 population.
- If this standard is applied to the existing 2000 population, the existing acreage is sufficient to meet the demand.

Table C.14
 Recommended Demand Standard
 Natural Open Space

Standard:	Ratio
Present Inventory	106.00 Acres
Present Sites	2 Site (Wilderness Park and Riverfront Property)
Present Ratio	15.55 Acres/1,000 Population
Recommended Demand Standard	15.26 Acres/1,000 Population

3. Development Standards:

- The city should establish development and maintenance standards for open space areas. This should take into consideration environmental issues, such as erosion, habitat protection and stream bank protection.

Methodology of Assessing Facility Needs

Establishing needs for specialized facilities such as sport fields, and trail systems, was derived from several analytical approaches. This included an analysis of present recreation participation levels, needs expressed in the survey, needs identified in the public workshop meeting, input from the sponsoring agency/group, trends, play and practice time requirements of sport teams and from mathematical models developed over the years from other studies.

On the following pages, the needs for specific types of facilities are discussed. Similar to the discussion of park land needs, the "existing ratio" and "recommended demand standard" are expressed as a ratio. The existing ratio is the existing population divided by the number of facilities (e.g., fields and miles). Likewise, the recommended demand standard is the desired ratio of population to facilities. This is based on the desired level of service.

By establishing a desired level of service and applying it to the existing and future population forecast, one can determine an appropriate recommended demand standard and ultimately the future needs. For determining the existing ratio for facilities, the population within the existing city was used.

Table C.17
Population Forecast
Stayton Planning Area

Year	Stayton Planning Area
2000	6,816
2020	13,827

Facility Needs

On the following pages, specific needs for each type of facility is discussed. The categories of facilities include:

1. Youth Baseball Fields
2. Adult Softball Fields
3. Soccer Fields
4. Pathways/Trails

Baseball Fields

Senior Baseball: 90' bases, 300+ foul line; Youth Baseball/Softball: 60' bases, 200-300' foul line;

A. Existing Conditions:

1. Current Supply:

- In Stayton, there are 2 fields that meet the physical requirements for baseball.

2. Development Level:

- Generally, the existing fields are in fair condition. Some of the fields do not have adequate infield conditions, proper backstops, outfield fencing, dugouts or automatic irrigation.

3. Maintenance Impacts:

- The maintenance and operation of baseball fields is labor intensive.

B. Public Involvement/Trends:

1. Workshop Results:

- The question was raised on whether or not a sport complex would be feasible.

2. Trends

- On the national scale, youth baseball has continued to increase.

3. Comparison to Other Communities:

- The current ratios for communities throughout the region range from 1 field per 820 population to 1 field per 1,780 population. Compared to other communities in Oregon, Stayton's current ratio of 1 field/3,408 population is well below this average.

4. Input from Sponsoring Agency:

- The Santiam Little League provides youth baseball and softball programs for 300 kids ages 6-16. In addition, the YMCA provides soccer and football programs for 400 youths.

Table C.18
Existing Ratios for Baseball
Selected Cities

City	Existing Ratio
Stayton	1 Field/3,408 Pop.
Lebanon	1 Field/820 Pop.
Happy Valley	1 Field/1,041 Pop.
Forest Grove	1 Field/1,080 Pop.
Independence	1 Field/1,358 Pop.
Monmouth	1 Field/1,544 Pop.
Troutdale	1 Field/1,780 Pop.
Dallas	NA

5. Input from the Parks Board:

The city should work cooperatively with other agencies to ensure that there are adequate fields that meet the demand for league and practice.

6. Analysis of Supply and Demand:

- Because of the lack of available information from local user groups (e.g. Stayton Little League), the assessment for need will be based on an average ratio of teams per population for communities in Oregon. Assuming an average of 1 team per 358 population, we can determine that, based on Stayton's 2000 population, the city would generate approximately 19 teams.
- At two games and two practices a week, the 19 teams would generate a demand for 57 games/practices a week. Assuming each field can accommodate 16 games a week, the two fields offer a supply of 32 games/practices a week. Based on a supply and demand analysis, there is a shortage of fields for 25 games/practices a week. Since each field can accommodate 16 games/practices a week, this means that there is a shortage of two fields.

C. Recommendations:

1. Level of Service:

- The recommended service level for baseball team play should be established at two games and two practices a week during the season. The recommended service level for field use should be maintained at 16 games/practices a week.

2. Determination of Demand Standard:

- It is recommended that the city decrease the level of service for baseball.
- The recommended standard of one baseball field per 1,700 population means that 2 additional fields are needed at the present time. By the year 2020, a total of 8 fields will be needed or six additional fields (based on the present inventory of 2 fields).

Table C.19
Recommended Demand Standard
Youth Baseball Fields

Standard:	Ratio
Present Inventory	2 Fields
Present Ratio	1 Field/3,408 Population
Recommended Demand Standard	1 Field/1,700 Population

3. Development Standards:

- The city should establish minimum development standards for baseball fields (game and practice). This should include infields, backstops, fencing (foul line and outfield) and dugouts.

4. Comments:

- Lighting some fields will also increase the number of games/practices a field can accommodate a week.
- Since there is a shortage of baseball fields in Stayton and a surplus of softball fields, some of the need can be accommodated by converting a few of the surplus softball fields to baseball use.

Softball Fields

Adult Softball: 275-300' outfield for slow pitch; 225' for men's fast pitch and 250' outfield for women's slow pitch.

A. Existing Conditions:

1. Current Supply:

- In Stayton, there are nine fields that meet the physical requirements for softball.

2. Development Level:

- Typically, the quality of development and the level of completeness vary from field to field.

3. Maintenance Impacts:

- The maintenance and operation of softball fields is labor intensive.

B. Public Involvement/Trends:

1. Workshop Results:

- A few of the participants of the workshop identified the need for additional sports fields. But, there was concern on whether a sports complex would be feasible.

2. Trends

- On the national scale, interest in softball has remained somewhat constant for the last five years. Regionally, interest in men's softball has declined, women's softball has remained constant and coed has significantly increased.
- Many communities are developing softball fields in a complex because they are more efficient to maintain and operate.

3. Comparison to Other Communities:

- The current ratios for communities throughout the region range from 1 field per 1,811 population to 1 field per 5,700 population. Stayton's ratio is 1 Field/ 687 Pop.

Table C.20
Existing Ratios for Softball
Selected Cities

City	Existing Ratio
Stayton	1 Field/687 Pop.
Independence	1 Field/1,811 Pop.
Forest Grove	1 Field/2,021 Pop.
Lebanon	1 Field/3,348 Pop.
Monmouth	1 Field/3,861 Pop.
Troutdale	1 Field/5,700 Pop.
Happy Valley	None
Dallas	NA

4. Input from Sponsoring Agency:

The Santiam Little League provides youth baseball and softball programs for 300 kids ages 6-16. In addition, the YMCA provides soccer and football programs for 400 youths.

5. Input from the Parks Board:

The city should work cooperatively with other agencies to ensure that there are adequate fields to meet the demand for league and tournaments.

6. Analysis of Supply and Demand:

- Because of the lack of available programs, the assessment for need will be based on an average ratio of teams per population for communities in Oregon. Assuming an average of 1 team per 447 population, we can determine that, based on Stayton's 2000 population, the city would generate approximately 15 teams.
- At two games and no practices a week, the 15 teams would generate a demand for 15 games/practices a week. Assuming each field can accommodate 10 games a week, we have a supply of 90 games/practices a week. Based on a supply and demand analysis, there is a supply of fields for 75 games/practices a week. Since each field can accommodate 10 games/practices a week, this means that there is a surplus of seven fields.

C. Recommendations:

1. Level of Service

- The service level for softball team play should be two games and no practices a week. The service level for unlighted field use should be 10 games a week and 15 games a week for lighted fields. Weekends should be reserved for tournaments and make-up games.

2. Determination of Demand Standard:

- It is recommended that the city decrease its level of service to provide softball fields.
- The recommended standard of one baseball field per 3,400 population means that no additional fields are needed at the present time. By the year 2020, a total of 4 fields will be needed. Since there are currently seven softball fields, the existing supply will meet the demand through the year 2020.

Table C.21
Recommended Demand Standards
Adult Softball Fields

Standard	Ratio
Present Inventory	9 Fields
Present Ratio	1 Field/ 687 Pop.
Recommended Demand Standard	1 Field/3,400 Population

3. Development Standards:

- The city should establish minimum development and maintenance standards for softball fields. This would include field dimensions (plus buffer), skinned infields, backstops, fencing (foul line and outfield) and dugouts.

Soccer Fields

Field Dimensions: youth soccer 55 x 100 yards; junior soccer 65 x 110 yards; adult soccer 75 x 120 yards

A. Existing Conditions:

1. Current Supply:

- Currently, there are three soccer fields that meet the physical requirements for soccer.

2. Development Level:

- Relatively to other fields, soccer fields require less maintenance.

3. Maintenance Impacts:

- The maintenance and operation of soccer fields is relatively low compared to other types of sports fields.

B. Public Involvement/Trends:

1. Workshop Results:

- There was no mention of the need for additional soccer fields.

2. Trends

- In the Northwest, soccer play has increased significantly in the last 10 years. Regionally, soccer participation is extremely popular and has grown significantly over the past few years.
- Similar to baseball/softball, many communities are developing soccer fields in a complex because they are more efficient to maintain and operate. They also enable the community to provide tournaments.

3. Comparison to Other Communities:

- Stayton's current ratio of 1 field/2,272 population. Current ratios range from 1 field per 833 population to 1 field per 5,700 population.
- The Santiam Little League provides youth baseball and softball programs for 300 kids ages 6-16. In addition, the YMCA provides soccer and football programs for 400 youths.

Table C.22
Existing Ratios for Soccer
Selected Cities

City	Existing Ratio
Stayton	1 Field/2,272 Pop.
Happy Valley	1 Field/833 Pop.
Forest Grove	1 Field/1,155 Pop.
Lebanon	1 Field/1,448 Pop.
Independence	1 Field/1,811 Pop.
Monmouth	1 Field/1,930 Pop.
Troutdale	1 Field/5,700 Pop.
Dallas	NA

4. Input from the Parks Board:

The city should work cooperatively with other agencies to ensure that there are adequate fields to meet the demand for league and practice.

5. Analysis of Supply and Demand:

- Because of the lack of available programs, the assessment for need will be based on an average ratio of teams per population for communities in Oregon. Assuming an average of 1 team per 370 population, we can determine that, based on Stayton’s 2000 population, the city would generate approximately 17 teams.
- At two games and two practices a week, the 17 teams would generate a demand for 51 games/practices a week. Assuming each field can accommodate 11 games a week, we have a supply of 33 games/practices a week. Based on a supply and demand analysis, there is a shortage of fields for 18 games/practices a week. Since each field can accommodate 11 games/practices a week, this means that there is a shortage of two fields.

C. Recommendations:

1. Level of Service:

- It is recommended that the city establish a service level for soccer play of two games and two practices a week.
- The recommended service level for field usage should be maintained at 11 games/practices a week.

2. Determination of Demand Standard:

- The recommended standard of one soccer field per 1,350 population means that two additional fields are needed at the present time. By the year 2020, a total of 10 fields will be needed or seven additional fields.

Table C.23
Recommended Demand Standard
Soccer Fields

Standard:	Ration
Present Inventory	3 Fields
Present Ratio	1 field/2,272 Population
Recommended Demand Standard	1 Field/1,350 Population

Pathways/Trails

A. Existing Conditions:

1. Current Supply:

- In Stayton, there are several significant trails located throughout Wilderness Park. The actual length of these trails is unknown, but it is estimated to be approximately 1.5 miles. The parks that contain trails are listed below:

* Wilderness Park

2. Development Level:

- Pathway and trail construction can range from unimproved to high-developed corridors.

3. Service Area:

- Depends on the type of trails and the length.

4. Maintenance Impacts:

- The maintenance of pathways is low compared to other types of recreational facilities. The maintenance costs of the existing pathway trails in Stayton is relatively low.

B. Public Involvement/Trends:

1. Workshop Results:

- Participants of the workshop identified the need for pathways/trails.

2. 1990 Survey Results:

- Need expressed for trails along the waterways

3. Trends

- In the Northwest, interest in trail related activities (walking, hiking, bicycling, rollerblading, jogging, etc.), have shown a remarkable increase in the last five years. Locally, trail related activities are very popular.

4. Comparison to Other Communities:

- Compared to other communities in Oregon, Stayton's current ratio of 0.22 miles/1,000 population is at the higher end of this average.

Table C.24
Existing Ratios for Pathway/Trails
Selected Cities

City	Existing Ratio
Stayton	0.22 Mi./1,000 Pop.
Happy Valley	0.24 Mi./1,000 Pop.
Troutdale	0.13 Mi./1,000 Pop.
Monmouth	0.11 Mi./1,000 Pop.
Dallas	0.03 Mi./1,000 Pop.
Independence	None
Lebanon	None
Forest Grove	None

5. Input from the Parks Board:

The city should develop an off-street network that links parks, school and other significant city features.

6. Demand Model:

- The following analysis and recommendations are for recreation related to off-street pedestrian and bicycle paths. The mathematical model we have developed for identifying trail need activities is shown below. This information has been developed over the years by comparing participation and trail systems in other communities.
- Total annual occasions for paved trails are based on an average per capita participation for communities in Oregon. Activities included walking for pleasure, bicycling for pleasure, jogging/running and rollerblading.
- Total annual occasions for unpaved trail area is based on average per capita participation for communities in Oregon. Activities included nature walks, hiking, bicycling (unpaved) and horseback riding.

Paved Trails

A.	Total annual participation:	83,836 occasions
B.	% of use on average peak day:	2.0%
C.	% who wish to use trail:	10%
D.	Occasions per mile:	8
E.	Turnover rate:	10

Formula: $\frac{A \times B \times C}{D \times E} = 2.09$ miles of paved trail presently needed

Total Paved Pathway/Trail Demand	2.1 miles
[Minus existing paved pathway/trails]	0.0 miles (est.)
Net Paved Pathway Demand	2.1 miles

Unpaved Trails

A.	Total annual participation:	38,851 occasions
B.	% of use on average peak day:	2.0%
C.	% who wish to use trail:	10%
D.	Occasions per mile:	4
E.	Turnover rate:	10

Formula: $\frac{A \times B \times C}{D \times E} = 1.94$ miles of unpaved trail presently needed

Total Unpaved Pathway/Trail Demand	1.94 miles
[Minus existing unpaved pathway/trails]	1.5 miles (est.)
Net Unpaved Pathway Demand	0.44 miles

C. Recommendations:

1. Service Level:

- It is recommended that the City increase the current level of service for pathways and trails.

2. Determination of Demand Standard:

- It is recommended that the City increase the current demand standard.
- The recommended standard of 0.59 miles per 1,000 population means that a total of 4.0 miles are needed at the present time. By the year 2020, a total of 8.16 miles will be needed.

Table C.25
Recommended Demand Standard
Pathways and Trails

Standard:	Ratio
Present Inventory	0.0 Miles (Paved) - estimate
	1.5 Miles (Unpaved) – estimate
Present Ratio	0.22 Miles/1,000 Population
Recommended Demand Standard	0.59 Miles/1,000 Population

3. Development Standards:

- The city should establish minimum development and maintenance standards for pathway and trails. This would include standards for construction, width, surfacing, site distance, maintenance, security, etc.

4. Comment:

- There are numerous opportunities to develop a city-wide trail system in future linear parks and open space areas. The intent would be to create a loop-system that would connect neighborhoods with parks and other community resources.

